

Eureka2 DDR2 800Mhz

NEW! Innovative Memory Tester

CST Inc, a leading worldwide manufacturer of memory tester and automatic Handler is proud to introduce the new Eureka2 Memory Tester, specifically designed for high volume memory distributor, memory module manufacturers, and memory repair service centers

The Eureka2 DDR2 Tester support the standard 240pin DIMM socket for testing the latest PC2-3200,PC2- 4300,PC2-5300, PC2-6400 DDR2 memory modules at “**Real Bus Speed**” and “**Real Cycle Time**”.

The Eureka2 DDR2 tester is designed and built with a flexible architecture, which can support testing DDR, DDR2, and DDR3 DIMM memory module with a change of optional Test Adapters.

New DDR2-Fault Focusing Algorithm & DC Parametric Test



Eureka2 DDR2 Feature

Auto Identify:

- Memory Type: Registered or Unbuffered
- Memory Configuration
- Memory Size
- Memory Frequency
- Memory Latency
- ECC or Non-ECC

Real Bus Speed Testing

- Real Cycle Time
- Super Fast Test time (512MB in 6secs)
- **OVERCLOCKING Capability up to 950 mhz**

Effective Test Algorithm

- Quick test, checks for assembly faults
- 23 Types of March test Pattern, to check for functional failures
- Programming and checking SPD
- **Fault Focusing pinpoint to faulty BGA chip**
- **DC Parametric/Leakage Test**

Advanced Feature.

- Intuitive User PC Interface Software
- User configurable Test Pattern
- Auto-Speed Sorting Tool
- SHMOO-Plot and Error Mapping Tool
- Auto Timing Setup
- IDD 7Current measurement
- Programmable DDR2 AC Parameters

Ez Upgrading

- Firmware upgrade via internet
- Support RoboFlex1 and RoboFlex2 Handler
- Interface with PC software via USB Port

Eureka2 DDR2 Technical Specification

Clock Frequency	: 200, 266, 333 & 400 Mhz
Data-rate	: 400,533,667 & 800 Mhz
Address depth	: 4 Giga-word (16 Row x 16 Col)
Data width	: Expandable 4,16,32 ,64 & 72 bit
Voltage range	: 1.3 to 2.4V with 0.1V increment
ICC measurement	: IDD 0 – IDD7
CAS Latency	: 3, 4 ,5 & 6 Clocks
Trcd & Trp Adjustment	: 3, 4 ,5 & 6 Clocks
Burst Length	: 4 & 8
Write Latency	: 2, 3 ,4 & 5 clock
ODT Adjustment	: 50, 75 ,150 ohm and Auto
OCD Calibration	: Auto Calibration
Refresh Cycle	: Auto / Self Refresh
DC Parametric Testing	: +/- 1 uA to 5mA
DC Test Pattern	: Walk Data , Walk Address , DQS, DQM, CKE, CS , and BA test
AC Test Pattern	: Mat-S, March-C, March-X, March Y(23 Type March Pattern)
SPD Programming	: Read/Write & Editable SPD Byte Reversible SPD Write Protect

General Specification

Single Site	
DDR2 Test Adapter	: 240 Pin DDR2 DIMM (Standard) : 200 Pin DDR2 SODIMM (Optional) : 60/84/92 Ball BGA Chip Adapter
Power Adapter	: Input 100 /250 Vac, 50 /60Hz ATX
Operating Temperature	: 15 ~110 Degree F
Host PC (Not included)	: AMD or Intel P4 via USB interface

SIMMTESTER.COM

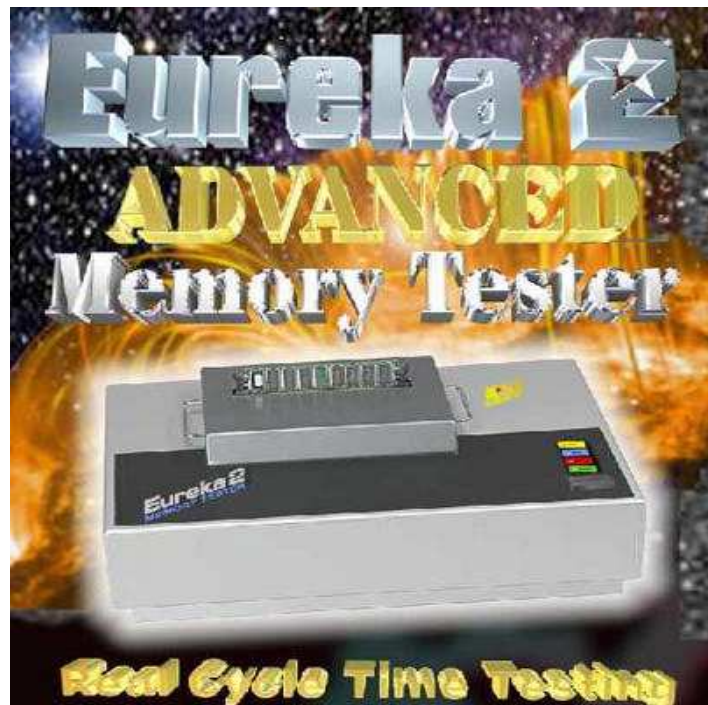
EUREKA2



YOU CAN'T AFFORD TO LET
MEMORY FAILURE
SHUT YOU DOWN

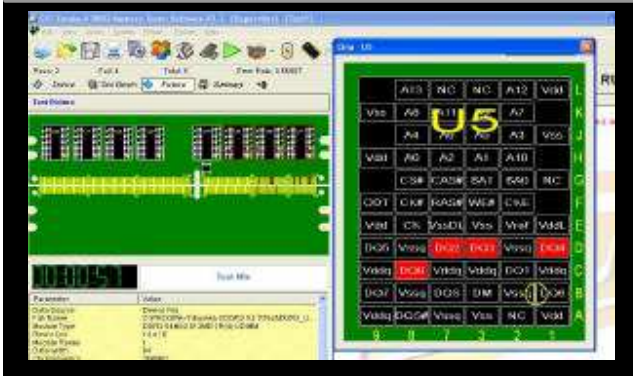


The Eureka2 test system supports DDR1,DDR2,DDR3 DIMM and SODIMM with optional Test Adapters. It also test different type of TSOP and BGA DDR,DDR2 & DDR3 chips with a change of Test Adapters.

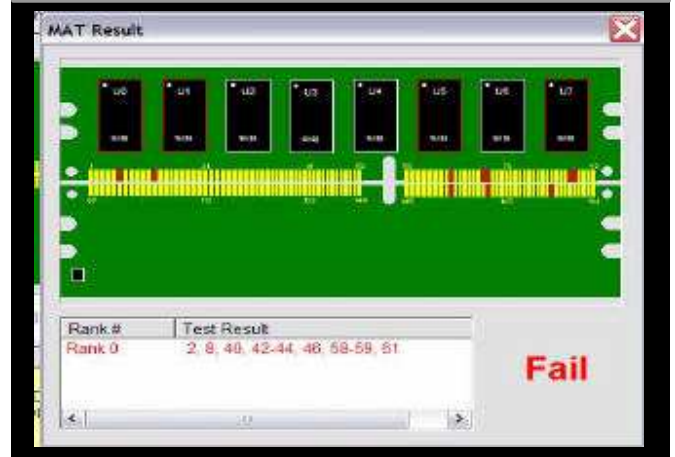


Eureka2 DDR2 - 800Mhz

UTT / ETT DDR2 Chip Sorting

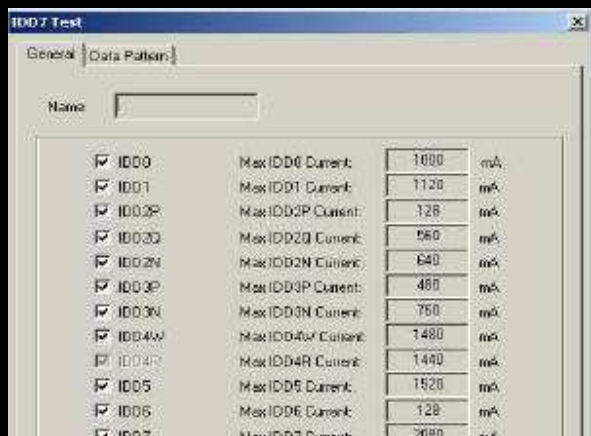


Accurate Bad Chip Detection

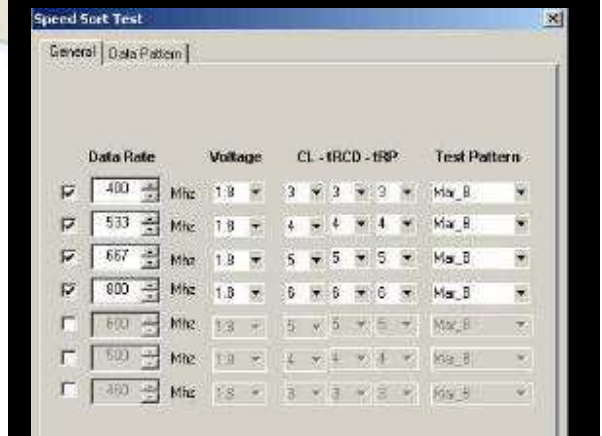


**Super Fast
Test Time**

**High
Performance**



**7 IDD Measurement & DC
Parametric Leakage Testing**



**DIMM Frequency: Speed and
CAS Latency Sorting**