

FLEXIBLE TAPING CELL



Production automation

Single / Double Taping module

Modular integration:

- JEDEC tray feeder
- Tube feeder
- Carrier tape feeder
- Bowl feeder
- Test units
- Vision control
- ...

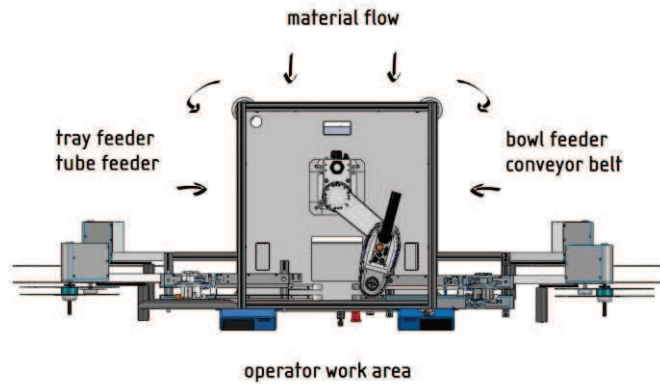
Minimal layout for maximal capabilities

Open configuration for material supply

There are numerous option to feed the material to the pick point.

Different modules can be integrated with the flexible taping cell in manner of material input, test units as electrical and mechanical tests, visual control units, etc...

Additional operations can be integrated into the taping process, as part assembly, part testing, etc...



Non-stop production, prolonged operation

Dual taping module configuration allows production without stops.



As one taping module switch from load mode to leader/trailer mode, loading operation continue to another taping module while operators change the output reel.

Switch of the work is made also if taping module stop has been forced from vision checker.

Single taping module configuration independency can be prolonged with the mounting of the automatic cutter on the taping module.

Gripper Change System

Manual gripper change system integrated in the flexible taping cell makes gripper change easy and fast as possible.

On request, multiple air and electronic connection can be provided on a gripper change system. Coding on the gripper prevents wrong operation procedure when inadequate gripper is attached.

Where multiple tasks are implemented in the work cycle and different grippers has to be used, an automated gripper change system can be implemented.



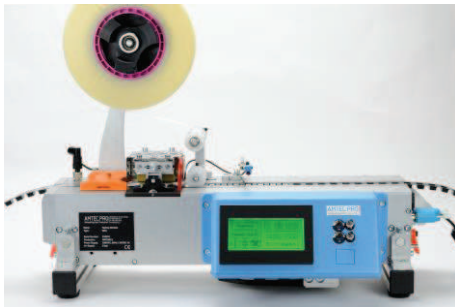
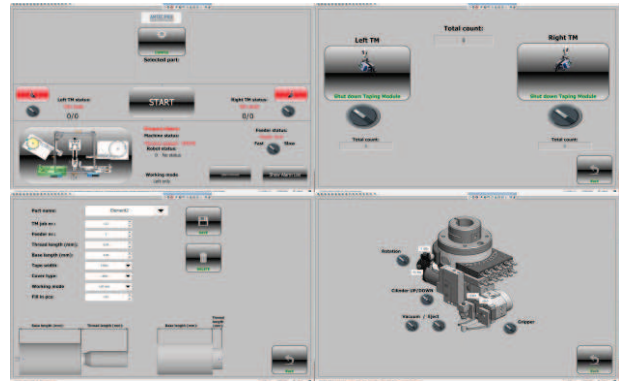
SCADA User Interface

Complete control of the system is done through SCADA user interface on a 15" touch screen. Working parameters are stored under job files in order to retrieve it when needed.

Testing and functionality as well as error status and history can be traced.

Additional communication with ERP systems is available.

Integration of the third party devices can be done under certain conditions.



Error Free Production

All the taping module functionality including intelligent sensing technology is integrated into the flexible taping cell. This allows operator error free work without constant interference with the machine.

Vision sensor for component presence and orientation can be integrated to the taping module.

For detailed taping module functionality, please check the taping module brochure.

Technical Data

Repeatability:	±0,01mm ±0,01°
Maximum payload:	3kg
Cycle time (1kg payload)	0,42s
Tape width:	8-88mm
Tape pitch:	2-72mm
Max pocket depth:	40mm
Electrical supply:	230VAC, 2A
Compressed air supply:	6bar, 10l/min
Weight:	200kg

