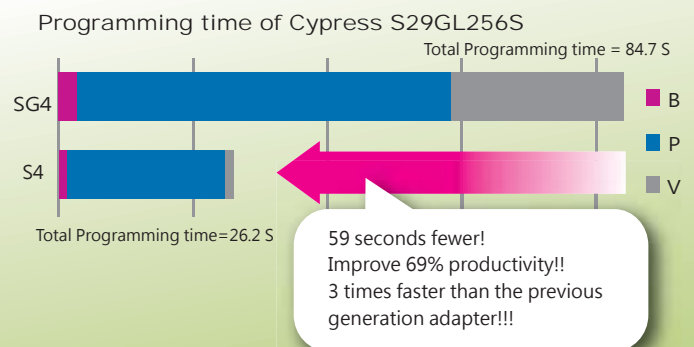


# A Versatile Device Programmer You can trust!



## Programmer Product Benefits

High Speed Memory Programming solution with S4 type socket board  
**The fastest programming in Flash Memory ever!!**



## Product Features



- Support MCU programming with gang 4 socket top, flexible design easy to first article or mass production



- High speed gang 4 programming for NAND, NOR, SPI, slashing the programming time by up to 80% flexible fast speed eMMC duplicating with up to gang 8 slave socket top



- Supports Security Provisioning Programming
- Backward compatible all T9x00 socket adapters and drivers
- Multi-linkable for gang programming sites
- Default friendly Software Image Builders for NAND and eMMC
- Optional Logic Devices Upgrade Pack for PLD, CPLD, FPGA devices

## Flexible System Configuration

To optimize programming throughput, the Model 9200 can be multi-linked with as many sites as required. Alternatively, a single system with multiple sites can easily be split into two or more separate systems.



## Various Socket Board Designs



# The New Programming Solutions for T9200 + Designed to Maximize Your Programming Throughput



T4 Socket Board

As the diversity and complexity of the microcontrollers emerge, System General announces its innovative design of T4 socket board, aim to slash the algorithm development time frame to 50%, and to enhance the programming flexibility in this quad-site socket boards.

Designed with ARM's core chip, T4 not only provides a flexible structure for algorithm development, but also provides one affordable solution to any customers. Partnered with our latest handler, the T4 can reach the programming throughput by nearly 5X.



S4 Socket Board

Initially designed to support NAND Flash with known bad sectors, the S4 socket board allows the T9800 programming system to output four devices, each with their own data pattern, simultaneously. Coupled with our proprietary mapping technology, the S4 socket board can program, with minimum software overhead, four devices each with unique serial codes. Additionally, the improved pin drivers in our T9800 programming system allow it to take advantage of the NAND Fast Access Mode, slashing programming time by up to 80%. Combined with a S4 socket board, NAND programming throughput improves by nearly 8X.

## General Specifications

- Product Description..... Support Memory devices and Microcontrollers as default settings; optional Upgrade Pack to extend supports to Logic devices
- Module Multi-Link..... Up to 20 sites
- Number of Sockets per Module..... 1 to 4 sockets, depending on the socket board designs
- Operation Mode ..... User-definable asynchronous or synchronous operation
- Pin-Drivers..... 112 Analog Pin Drivers
- Pin-Drivers Outputs..... VCCP, VPP, VPE, VPS, VIH, VIL, ZH, ZL, Gnd (range: 0 ~ 21.0V)
- Hi-Voltage DAC..... 3 sets (all current-mode)
- RAM Buffer..... 8192 Mbits standard (expandable to 16384 Mbits)
- Communication Interface..... USB 2.0 (Windows XP/7/10 required)

## Physical Specifications

- Dimensions..... 20.0 x 14.5 x 10.3 cm (7.9 x 5.7 x 4.1 inch)
- Shipping dimensions 20.0 x 14.5 x 10.3 cm (7.9 x 5.7 x 4.1 inch)
- Weight..... 2.40 kg (5.33 lbs)
- Shipping weight..... 3.53 kg (7.84 lbs)

## Electrical Requirements

- Operating voltage..... 100-240 VAC
- Frequency range..... 50/60 Hz
- Power consumption..... 40 VA max

## PC System Requirements

- Operating system..... Windows XP/7/10
- Processor..... Pentium 4 or above
- Free disk space..... 3GB recommended
- DRAM..... 512MB recommended
- Communication..... USB 2.0 recommended

## Option

- Logic Devices Upgrade Pack: Supports PLD, CPLD, FPGA devices

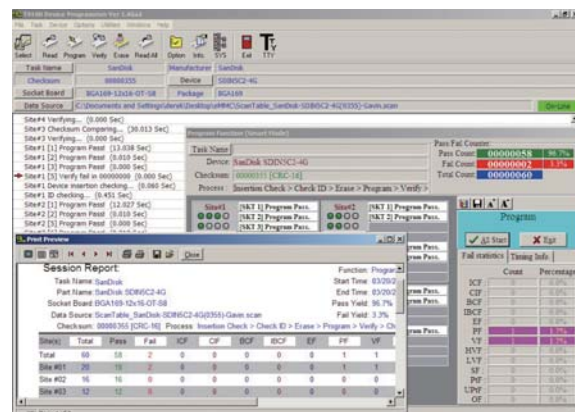
## Environmental Requirements

- Operating temperature..... 5~45°C (41~113°F)
- Operating humidity..... 90% non-condensing

## Standard Accessories

- Power cord
- Power connection cable
- System software CD (on-line help and tutorial)
- USB cable

## Enhanced Job Management Control and Statistics Report



**System General Taiwan**  
6F, No. 205-3, Sec. 3, Beixin Rd,  
Xindian Dist, New Taipei City, Taiwan  
(TEL): +886-2-8913-1997  
(FAX): +886-2-2911-1283  
(URL) www.sg.com.tw  
(E-Mail) info@sg.com.tw

**System General USA**  
6469 Almaden Expy Ste 80#377  
San Jose, CA 95035 USA  
(TEL): +1-833-845-3900  
(FAX): +1-408-263-6910  
(URL) www.sg.com.tw  
(E-Mail) Jonathan.lee@sg.com.tw

**System General China**  
3F, Big 7 West, Sinosteel Building  
Maque Industry Village, Nanshan, Shenzhen, China  
(TEL): +86-13510816270  
(FAX): +86-755-26710195  
(URL) www.sg.com.tw  
(E-Mail) xiaodan.zhang@sg.com.tw

