

SG-RIT05

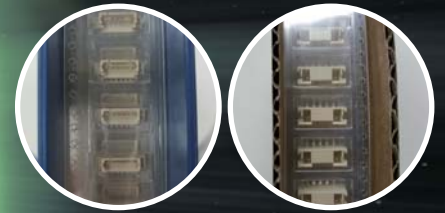
Tape-Reel Vision Inspection Machine



Upward CCD
for bottom side inspecting



Downward CCD
for top side inspecting



Vision Inspection System
for devices or components

Introduction

SG-RIT05 is the new generation automated reel to reel system for analyzing variety IC devices or components after taping. With twin high performance CCDs technology, the system optimizes visual mark inspection, pin lead detection and sealing quality. Depending on the configuration to the package type, the throughput goes up to 50K UPH.

Vision Inspection Capabilities	Vision Repeatability Accuracy	30 um(Camera Resolution 1600x1200, 2M pixels)
	Mark Inspection	Missing, Incomplete, Incorrect, Reverse, Orientation
	Sealing Inspection	Broken Seal, Non-Seal, Thinning Seal
	Damaged Devices	Chipped off, Cracked >1.5mm
	Others	Counter, Empty Pocket, Unit Overturned, Unit Out of Pocket
Features	Tape Width	Conversion between 8mm to 44mm carrier tape width (Optional ring-light will be requested for tape width >12mm)
	Throughput	Up to 50,000 units UPH(Based on 8mm width and 4mm pitch package type)
	Support Package	Reel Input to Reel Output

Specifications

- N.W.: 145kgs
- G.W.: 250kgs
- Dimension: 90cmx143cmx140cm
- Shipping Dimension: 115cmx95cmx165cm
- Power required: 220V/10A input



Fairchild (Taiwan) Corporation
6F, No. 205-3, Sec. 3, Beishin Road,
ShinDian Dist, New Taipei City, Taiwan
(TEL): +886-2-2917-3005
(FAX) +886-2-2911-1283
(URL) www.sg.com.tw
(E-Mail) info@sg.com.tw

System General America
1673 South Main Street,
Milpitas, CA 95035, USA
(TEL): 1-408-263-6667
(FAX) 1-408-263-6910
(URL) www.systemgeneral.com
(E-Mail) sales@systemgeneral.com

SGC Semiconductor Co., Ltd
3F, Bldg 7 West, Sino Steel Building,
Maque Industry Village,
Nashan, Shenzhen, China
(TEL) +86-755-26710185-6
(FAX) +86-755-26710195
(E-Mail) info@sg.com.tw

